

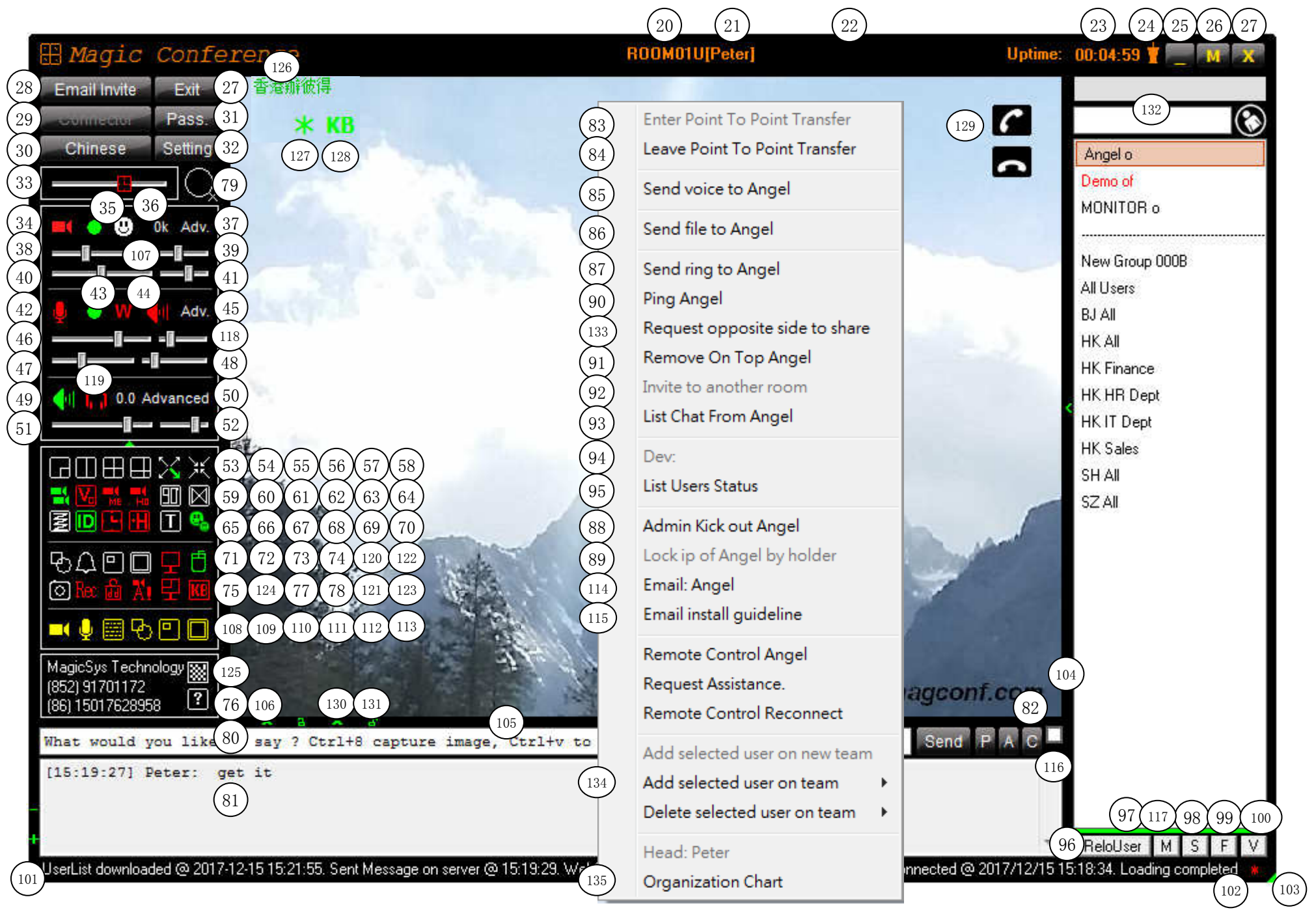
Magic Conference Simple Instruction

The screenshot shows the MagConf Connector interface with the following elements and callouts:

- 1: Language dropdown menu (Chinese)
- 2: Connect IP:Port input field (127.0.0.1:3333)
- 3: Alias (optional) dropdown menu
- 4: My Name input field (Peter)
- 5: Meeting Mode dropdown menu (User Mode)
- 6: Meeting Room dropdown menu (ROOM01, 0+0/-1 occupied)
- 7: User Name input field (Peter)
- 8: Password/Forget input field (*****)
- 9: Delete button
- 10: Save button
- 11: Reload button
- 12: Save checkbox
- 13: Go button
- 14: Skip button
- 15: Reset button
- 16: Cancel button
- 17: Version information (V 2.3.0)

1. Change display language.
2. Login IP and port, allow domain name.
3. Server alias, for identify current IP:PORT
4. My name, compulsory.
5. Meeting Mode, guest/holder|user|demo|open
 1. guest/holder: only 1 holder, input holder password, then get dynamic password for guest. Expired password is not allowed to login again.
 2. user: setup user and password on server. This is the highest security login method, not like G/H. Allow send offline message or file.
 3. demo: holder can control all guest input device. Allow control individual user mic and webcam.
 4. open: only IP,Port,Room#, then no password login. This is no security login, allow anyone.
6. If no room selected, will according to your user name or password to login, enter available room. If room selected, ensure user name and password correct.

7. User name for user mode only.
8. Password, user password, holder password, guest dynamic password. Guest dynamic password return when holder login.
9. Delete current IP:PORT .
10. Save current IP:PORT .
11. Refresh room list.
12. Save password to config.ini. If copy this file to other computer, it will not valid.
13. After user name and password, press button to enter room.
14. Skip login, learn how to use MagConf.
15. Reset user account or holder ac. If user or holder fail to logout, then reset ac by this. Select correct IP:Port, user name and password, click reset to reset account on server.
16. Exit MagConf.
17. MagConf connector notification area.
18. Run once as Administrator if this is the first run of MagConf. If fail again in future, run once again as Admin.
19. If pc installed with antivirus, let MagConf pass. If still fail, unload antivirus, then try again.



20. Logged meeting room.
21. Login name.
22. Guest dynamic password.
23. Up time.
24. Always on top.
25. Min window.
26. Max window.
27. Exit MagConf.
28. Invite guest by email to enter meeting room.
29. Open connector.
30. Change display language.
31. Change user or holder password.
32. MagConf advanced setting.
33. Device Timer, double click to freeze.
34. Turn on/off camera.
35. Manually turn on/off Cam.
36. Upload Rate.
37. Advanced Cam setting.
38. WebCam rate, double click to freeze.
39. Control opposite cam: Holder control all guests cam rate, or only 2 cams, or One to One Communication, 0 as Not control.
40. Cam resolution.
41. Control opposite cam: Holder control all guests cam quality, or only 2 cams, or One to One Communication, 0 as Not control.
42. Turn on/off mic.
43. Manually turn on/off Mic.
44. Walky Talky mode, when you speak, other user cannot speak.
W=off X=on Y=you are speaking Z=other is speaking.
45. Advanced Mic setting.
46. Mic. Volumn.
47. Mic. Amplifier.
48. Noise Reduction, higher value, lesser noise.
49. Turn on/off Speaker.
50. Advanced Vol setting.
51. Speaker Volumn.
52. Public session speaker volumn.
53. Switching big and small cam, valid only when there are 2 cams.
54. Switching 2 equal cams, valid only when there are 2 cams.
55. Switching all cams to same size.
56. Switching main and other cams, main cam large, for holder/demo.
57. Maximize Cam, double click window to restore.
58. Minimize Cam and set MagConf always on top.
59. Switch on/off all cam, no cam streaming from server.
60. Switch on/off Prefer Voice to Cam, cams will slow down.
61. Switch on/off my cam only under public session.
62. Switch on/off holder cam only under public session.
63. Rotate Cam by 90 degree.
64. Mirror Cam
65. Compact/clean Cam
66. Show/Hide ID 67. Show/Hide Time
68. Switch on/off guest to holder only mode, for holder only under public session.
69. Set transparent effect.
70. Switch on/off cam display, for saving cpu time or bandwidth when recording or remote control.
71. Drawing board 72. Seng Ring to all
73. Ctrl+9 capture rectangle. **Ctrl+8 capture image to clipboard ONLY, will not send out, then Ctrl+v in chat box to send image.**
74. Ctrl+0 capture desktop.
75. Take photo
76. Download MagConf simple instruction.
77. Send/Stop do not disturb
78. When form activated, auto switch on device, cam and mic.
79. Enlarge control panel, special for windows pad.
80. Text message input area.
81. Text message history.
82. All time and user message log.
83. After Enter One to One Communication, only you and opposite can receive message, 3rd user will not receive, but you can still receive all user incoming message.
84. Leave One to One Communication, back to public session.
85. **Send voice, under user mode or One to One Communication.**
86. **Send attachment, under user mode or One to One Communication.**
87. Send ring, valid only under One to One Communication.
88. Kick out user.
89. Lock ip of selected user by holder.
90. Ping connection speed test to selected user.
91. Move/Remove On Top.
92. Invite selected user to another room
93. Display all message of selected user.
94. Display devices of selected user.
95. Display all user status.
96. Reload user, update all status of users.
97. Transfer file status line.

98. Stop sending file, all transfer will stop.
99. File box.
100. Voice box.
101. System message area.
102. More status, double click to open.
103. Resize window.
104. Expand panel.
105. Expand panel.
106. Hide panel.
107. Capture my face for audio conference.
108. Switches on/off available for Demo Room Holder only, yellow is disable, red is off, green is on.
109. Microphone.
110. Text message.
111. Drawing.
112. Capture rectangle.
113. Capture full screen.
114. Send email to selected user.
115. Email install guideline.
116. Check this box will create email at the same time.
117. Manual get server message.
118. Echo Cancellation, higher value, more echo.
119. Turn on HeadSet and all pick up headsets, increase voice quality.
120. Turn on/off DeskTop.
121. Turn on/off Custom DeskTop.
122. Turn on/off Mouse Control.
123. Turn on/off Keyboard Control.
124. Ctrl+7 Recording/Stop conference.
125. Magic clipboard (web version).
126. Click to select user, double click split windows, right click menu, drag and drop change size.
127. Turn on/off move desktop by opposite side mouse.
128. Request opposite side to share keyboard/mouse.
129. Select user then click, wait for accept. support multi dial.
130. Expand/hide web version message box.
131. Lock panel, no auto change.
132. Search user alias and email address, press {Enter} search next.
133. Enter One to One Communication, then request share desktop. Or non user mode, request share desktop.
134. Create new team/group.
135. Organization Chart.

Magic Conference Features and Introduction

- . 9 main features, 1. webcam, 2. voice, 3. text, 4. drawing, 5. transfer file, 6. send voice, 7. ip phone, 8. desktop share and remote control, 9. video and voice recording.
- . MagConf have One to One streaming session under public session, two users have private talk under public environment. Two users not only discuss each other, but able to listen other people at the same time.
- . Fully control the transfer rate of net meeting.
- . Adjust other sides cam rate every time.
- . Easy to identify which one is talking in a group, no need to recognize by ear.
- . Support selecting multiple user on right panel user list.
- . Support unicode text, any language on transfer text message.
- . Instant send text message, not like email transfer with latency.
- . Made use of Instant Messenger, no need to receive lots of junk email or junk message.
- . MagConf design for Text Message, Internal group discuss, sales and IT department to exchange message.
- . Share text and picture in a second by shortcut, no need to waste of time to send email, it is a very convenient.
- . Support send group message.
- . Able to transfer online/offline file by private/cloud server. IM have better performance then email and telephone system.
- . Fast to know user is on seat or not.
- . Easy to invite guest to join your meeting.
- . Able to init another private meeting under opened meeting for higher security.
- . Startup MagConf more than 1 time on the same computer, share the same webcam.
- . Made use of headphone and mic will have better meeting performance.
- . Able to talk under "Walky Talky Mode", no voice congestion.
- . Several webcam output effect, ie. gray scale, sketch, brightness, contrast, blur.
- . Support max 1000 user, 100 webcam in the same meeting room by a power server.
- . Support max 1000 meeting room by a power server.
- . MagConf server can startup more than 1 time, max 9. Enable more user to join meeting at the same time on the same server.
- . Able to bypass firewall protection by making use of proxy server or port forward software.
- . Can run as simple motion detection device, other side can observe, record and run command when warning.
- . By changing different setting , switch MagConf to special application, ie. remote monitor, trigger motion detect command.
- . 100% made in Hong Kong.

How to get perfect conference

- . Before you enter conference, study MagConf instruction.
- . Prepare your drink and accessories before meeting.
- . Prepare a headset and mic., perfect for voice streaming.
- . Ensure your background of webcam is simple, no colorful or debris.
- . Try to turn off device with noise, ie. tv or radio.
- . Try to make a login test on selected meeting room, self test your mic and headphone, adjust to a suitable value.
- . Adjust the webcam speed and resolution, avoid too much data going out.
- . How to adjust value of microphone
 1. When you hear low voice from opposite, ask to increase mic volume.
 2. When you hear unclear voice again, ask to increase amplifier value.
 3. When you hear voice with noise, ask to increase noise reduction value from 0 to 1, try to increase if still noisy.
 4. Then opposite side will keep these values for future net meeting.

Magic Conference Advanced Settings

Start up:

- . Auto start up recording after MagConf login. When MagConf run as recorder, turn this value on.

Motion Detection:

- . Enable Motion Detection on MyCam,
Motion Detect Tolerance, smaller value result in larger image output, use more bandwidth.
Adjust this value will adjust motion detection accuracy, set to 0 will output complete webcam image.
Auto Set Resolution to 100% when motion detected, other side will have highest resolution.
Set Movement, when detection over this value, will trigger motion detect warning.
Correct motion detection settings will have better video output.
- . DeTheft ShortCut On/Off, for fast turn ON/OFF DeTheft
Click mouse to text box, press combination keys (Ctrl+Alt+Shift+Win+Key) to setup, default is Alt+N to turn ON/OFF.
Seconds allowed for shortcut on/off warning, min 1, max 99. Must enter/leave computer during this period.

Others:

- . Enable Device Timer, will auto ON after enter One to One Communication.
- . I have Bluetooth Headset, this setting can show in user menu of other side.
- . Auto Accept One to One Communication, auto answer. Do not check this setting if higher security is required
- . Auto Reject One to One Communication Timeout, if Auto Accept OFF, you have some secs for accept connection before timeout.
- . Uninstall MagConf Service, this service is for auto startup MagConf client when click on MagConf http invitation link, auto login MagConf system without input connection info.
- . Create Auto Login ShortCut on Desktop, can create shortcut on desktop after login a meeting room, special for schedule.

Microphone Advanced Settings:

- . You can connect mobile mic to pc by wifi, download "LanMic" App on mobile, set mic output format to 22050 Hz and 16 bit.
Startup mobile app, then input ip:port on text box, click button to connect mobile.
Warning: There is a security risk to connect mobile mic to pc through wifi, do not use this feature if not safe.
- . Additionally, if no speaking but signal observed, set higher Silence Threshold value until no signal.
- . Remote mobile mic, support up to 25 IP.
- . Mixer, support up to 25 usb microphone, connect to 1 MagConf client, 25 people can speak in their seats.

Server Settings:

- . Auto start recording on server by "MONITOR" user mode account, detail see Setting.txt.
- . Support "Head Of User" on server user setting, result for generating organization chart.

Magic Conference Advanced Settings

How to Swith MagConf to Remote Control

- . Select non "User Mode" room to login
- . If "Guest/Holder Mode" is selected, ensure server dynamic guest password is valid, suggest a 1 year password.
- . Go to advanced setting > Startup page, select "Startup remote control after login", select "And startup DOS SHELL command" and select "Hide main window after login".
- . Finally, go to others page, click "Create Auto Login ShortCut on Desktop".
- . Click "OK" to finish all settings.